



## HIGH SECURITY RFID CARD READER TOUCH SCREEN / KEYPAD + BIOMETRICS



### COMPATIBILITY

- MIFARE® Classic & Classic EV1
- MIFARE Plus®
- MIFARE® DESFire® 256, EV1 / EV2
- SECard software
- OSDP™ / SSCP protocols



### LET YOUR IMAGINATION FLOW

Customization of the multicolor LEDs (RGB, 360 colors)



Your logo, customized image and text display



### SECURE YOUR CRITICAL SITES WITH A STRONG AUTHENTICATION

The Architect® ARC-F reader provides secure multi-factor authentication by combining the most secure open RFID technologies on the market, a touch screen / keypad and a biometric fingerprint sensor.

### FINGERPRINT SECURE MANAGEMENT

Several fingerprint management possibilities depending on your security needs:

- **Fingerprint templates directly stored in the RFID card** (CNIL French legislation compliance).
- **Fingerprint templates stored in the reader or in the system.**
- **Biometric derogation** to manage one-time visitor or difficult finger etc.

### WELCOME TO HIGH SECURITY

The reader uses the latest MIFARE® DESFire® EV2 contactless chip technologies with new data security mechanisms:

- **Secure Messaging EV2:** secure transaction method based on AES-128 with protection against interleaving and replay attacks.
- **Proximity Check:** improved protection against relay attacks.

All public encryption algorithms can be used (3DES, AES, RSA, SHA, etc.), which are recommended by official data security agencies (such as the French national agency ANSSI).



### CERTIFICATIONS



### SMART FUNCTIONS



« **Scramble Pad** »: protects your access control system from unauthorised use of access codes by randomly displaying keys.



**Hybrid:** display of information (logo, instructions, personalized messages, images) and keyboard by a simple touch-screen wake-up call.



**Bell:** Touch button allowing you to use the reader as a standard bell.

### ADVANCED ANTI-FRAUD FUNCTIONS

The Architect® biometric reader is designed to resist fraud attempts:

- **False finger detection:** the reader detects a wide range of counterfeit fingerprints made of latex, Kapton, transparent film, rubber, graphite, etc.
- **Detection of live fingers**
- **Duress finger:** the admin can assign a finger number dedicated to authentication when the user is threatened.

## SPECIFICATIONS

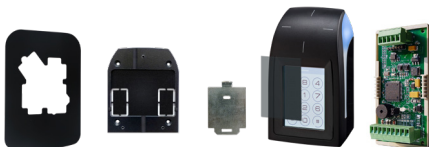
Operating frequency/Standards	13.56 MHz. ISO14443 type A
Chip compatibility	MIFARE® Classic & Classic EV1, MIFARE Plus® & Plus® EV1, MIFARE® DESFire® 256, EV1 & EV2
Functions	Read only: private ID (sector/file) or Secure Protocol (Secure Plus) / Secure Read Write
Digital fingerprint sensor	Optical (SAFRAN MorphoSmart™ CBM E3) - ≤ 1 second for a 1:1 authentication
Communication interfaces & protocols	TTL Data Clock (ISO2) or Wiegand (ciphered mode - S31) / RS232 (ciphered mode S32) / RS485 (ciphered mode - S33) with secure communication protocols SSCP & SSCP2 ; OSDP™ V1 (plain communication) & V2 (SCP secure communication)
Decoder compatibility	Compatible with EasySecure interface
Touch Screen	Color touch screen - 2.8" - 240 x 320 pixels / 12 keys - Standard or Scramble pad mode Functions: Card AND Key / Card OR Key Configuration by RFID card, software or UHF technology according to the interface
Reading distances*	Up to 4 cm / 1.57" with a MIFARE DESFire® EV2 or Classic card
Light indicator	2 LEDs RGB - 360 colors Configuration by RFID card, software, external command (0V) or UHF technology according to the interface
Audio indicator	Internal buzzer Configuration by RFID card, software, external command (0V) or UHF technology according to the interface
Power requirement	Typical 350 mA / 12 VDC
Power supply	7 VDC to 28 VDC
Connections	10-pin plug-in connector (5 mm / 0.2") / 2-pin plug-in connector (5 mm / 0.2"): O/C contact - Tamper detection signal or the reading of a credential
Material	ABS-PC UL-V0 (black) / ASA-PC-UL-V0 UV (white)
Dimensions (h x w x d)	166.2x 80 x 30.2/71 mm / 6.54" x 3.15" x 1.19/2.8" (general tolerance following ISO NFT 58-000 standard)
Operating temperatures	- 10°C to + 50°C / De + 14°F a + 122°F / Humidity: 0 - 95%
Tamper switch	Accelerometer-based tamper detection system with key deletion option (patented solution)
Protection	IP65 Level - Weather-resistant with waterproof electronics (CEI NF EN 61086 certification)
Mounting	Compatible with any surfaces and metal walls - Wall mount / Flush mount: - European 60 & 62 mm / 2.36" & 2.44" - American (metal/plastic) - 83.3 mm / 3.27" - External dimensions: 101.6 x 53.8 x 57.15 mm / 3.98" x 2.09" x 2.24" Examples: Hubbel-Raco 674, Carlon B120A-UP
Certifications	CE, FCC and UL
Part numbers	
Read only	Secure - TTL ..... ARC-R31-F/PH5-xx/y Secure / Secure Plus - TTL ..... ARC-S31-F/PH5-xx/y Secure - RS232 ..... ARC-R32-F/PH5-5AB/y Secure - RS485 ..... ARC-R33-F/PH5-7AB/y Secure / EasySecure Interface - RS485 ..... ARC-R33-F/PH5-7AA/y Secure / Secure Plus - RS485 ..... ARC-S33-F/PH5-7AB/y Secure / Secure Plus / EasySecure Interface - RS485 ..... ARC-S33-F/PH5-7AA/y
Read/write	Secure - RS232 ..... ARC-W32-F/PH5-5AA/y Secure - RS485 ..... ARC-W33-F/PH5-7AA/y Secure SCP2 CSPN compliant - RS485 ..... ARC-W33-F/PH5-7AD/y Secure OSDP™ - RS485 ..... ARC-W33-F/PH5-7OS/y
	y: casing color (1: black - 2: white)

## DISCOVER OUR CREDENTIALS



13.56 MHz ISO cards & key holders

## AND OUR ACCESSORIES



Decorative plate / Spacers / Mounting plate / Privacy filter...



**SECARD**  
SECard configuration kit and SSCP, SSCP2 & OSDP™ protocols

\*Caution: information about the distance of communication: measured from the centre of the antenna, depending on the type of identifier, size of the identifier, operating environment of the reader, power supply voltage and reading functions (secure reading).

Legal statements: STid, STid Mobile ID® and Architect® are trademarks of STid SAS. All other trademarks are property of their respective owners. This document is the exclusive property of STid. STid reserves the right to stop any product or service for any reason and without any liability - Noncontractual photographs.

### Headquarters / EMEA

13850 Gréasque, France  
Tel.: +33 (0)4 42 12 60 60

### PARIS-IDF Office

92290 Châtenay-Malabry, France  
Tel.: +33 (0)1 43 50 11 43

### STid UK Ltd. LONDON

Hayes UB11 1FW, UK  
Tel.: +44 (0) 192 621 7884

### STid UK Ltd.

Gallows Hill, Warwick CV34 6UW, UK  
Tel.: +44 (0) 192 621 7884

### NORTH AMERICA Office

Irving, Texas 75063, USA  
Tel.: +1 310 803 2114

### LATINO AMERICA Office

Cuahtémoc 06600 CDMX, México  
Tel.: +521 (55) 5256 4706

### AUSTRALIA / APAC Office

Ultimo, Sydney NSW 2007, Australia  
Tel.: +61 (0)2 9274 8853

info@stid.com

www.stid-security.com